



Pacific Maximo Users Group (PacMUG) Central 2025 Workshop

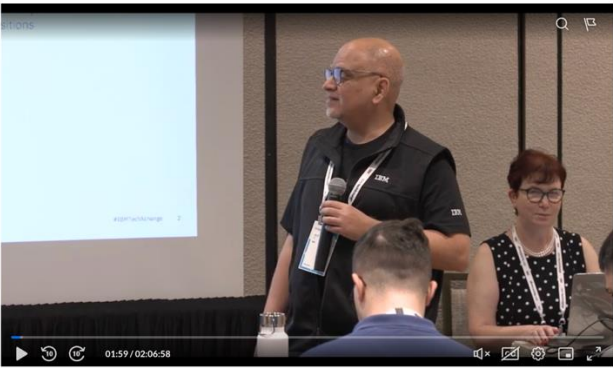
May 21 – 22, 2025

Sacramento, CA - United States

<https://maximogroups.zohobackstage.com/PacificMaximoUsersGroupPacMUGCentral2025>

Modernizing Maximo: Upgrading from EAM to MAS on OpenShift

Introduction



IBM TechXchange

Optimizing “IBM Maximo Manage” on Single-Node OpenShift: A practical guide

Arif Ali
Senior Partner Technical Specialist
- Partner facing, IBM

Miryam Kofman
Partner Technical Specialist, IBM

Anantharaman Subramanian
Principal Partner Technical Specialist, IBM

IBM Video Learning Subscription

The IBM Video Learning Subscription is an ideal and inexpensive way for anyone to learn about the latest IBM products and technology by watching recordings of IBM web seminars, online classes, and TechXchange conference seminars.

These are technical videos that cover a broad range of topics at all skill levels in the areas of Artificial Intelligence, Automation, Data Analytics and Business Automation, IBM Cloud, IT Infrastructure, Security, and Sustainability.

New videos are being added continuously throughout the year.

Access Video Subscription →

Explore Video Subscription →

IBM Video Learning Subscription

- Continuously updated throughout the year
- Unlimited access for one individual for one year

Starting at **\$99.00** USD per year*

[Purchase](#) [Learn more](#)

What's included? ▾

Provides anytime, anywhere access to a library of video content led by IBM technical experts.

ibm.com/training/subscriptions



Arif Ali - Senior Partner Technical Specialist aali@us.ibm.com



Miryam Kofman - Partner Technical Specialist mkofman@us.ibm.com

Practical Guidance for MAS on OpenShift



- Challenge:

- Difficulty in understanding and utilizing OpenShift
- Complexities of OpenShift's diverse deployment models and platforms
- Barriers to efficient upgrades from Maximo EAM to MAS Manage

- Solution:

- We offer practical, hands-on workshop for smoother transitions and optimization
- We demystify OpenShift for MAS users
- We provide clear explanations and comprehensive overviews



2) Analyze
Java
customization

4) Install
Red Hat
OpenShift

1) Review
Maximo 7.6.1.3

3) Perform Maximo
Data Backup

5) Install MAS Core +
Manage and Upgrade



Essential Elements: IBM Maximo Application Suite Core

- Authentication
 - IBM's software entitlement key (password)
 - IBM's software license file (App Points license)
- Version
 - Channel (LTS release – major releases)
 - Catalog (Monthly release – bug fixes, new features)
 - Feature channel (pre-release software for demo purposes only)
- Properties
 - Instance ID, Workspace ID, Workspace Name
 - Configuration directory
- Dependencies*
 - MongoDB
 - Suite License Server
 - Data Reporter
 - Certificate Manager
 - Domain Name Services

*As of MAS Core 9.0. Subject to change.

Notices and disclaimers



- © 2025 International Business Machines Corporation.
All rights reserved.
- This document is distributed “as is” without any warranty, either express or implied. In no event shall IBM be liable for any damage arising from the use of this information, including but not limited to, loss of data, business interruption, loss of profit or loss of opportunity.
- Customer examples are presented as illustrations of how those customers have used IBM products and the results they may have achieved. Actual performance, cost, savings or other results in other operating environments may vary.
- Workshops, sessions and associated materials may have been prepared by independent session speakers, and do not necessarily reflect the views of IBM.
- Not all offerings are available in every country in which IBM operates.
- Any statements regarding IBM’s future direction, intent or product plans are subject to change or withdrawal without notice.
- IBM, the IBM logo, and ibm.com are trademarks of International Business Machines Corporation, registered in many jurisdictions worldwide. Other product and service names might be trademarks of IBM or other companies.
A current list of IBM trademarks is available on the Web at “Copyright and trademark information” at: www.ibm.com/legal/copytrade.shtml.
- Certain comments made in this presentation may be characterized as forward looking under the Private Securities Litigation Reform Act of 1995.
- Forward-looking statements are based on the company’s current assumptions regarding future business and financial performance. Those statements by their nature address matters that are uncertain to different degrees and involve a number of factors that could cause actual results to differ materially. Additional information concerning these factors is contained in the Company’s filings with the SEC.
- Copies are available from the SEC, from the IBM website, or from IBM Investor Relations.
- Any forward-looking statement made during this presentation speaks only as of the date on which it is made. The company assumes no obligation to update or revise any forward-looking statements except as required by law; these charts and the associated remarks and comments are integrally related and are intended to be presented and understood together.