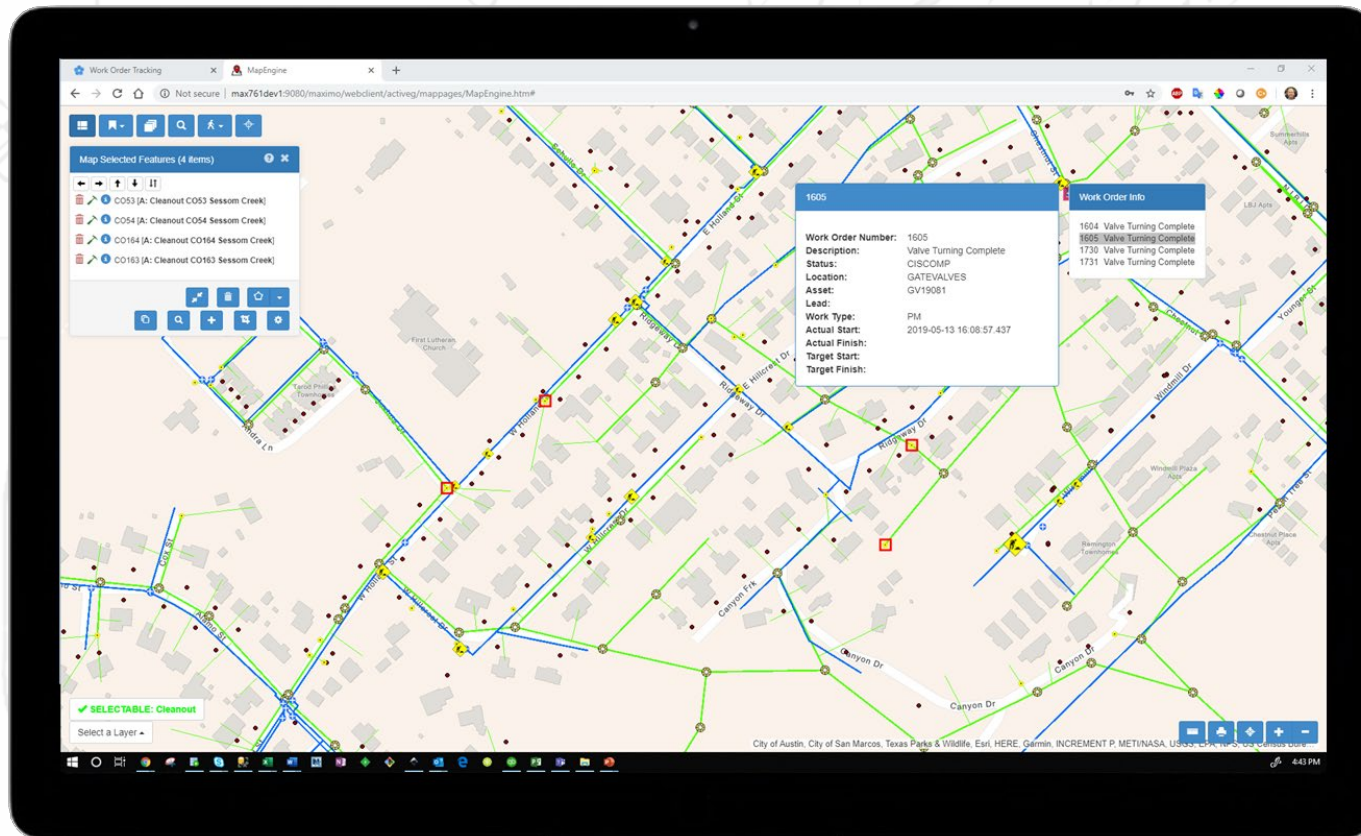


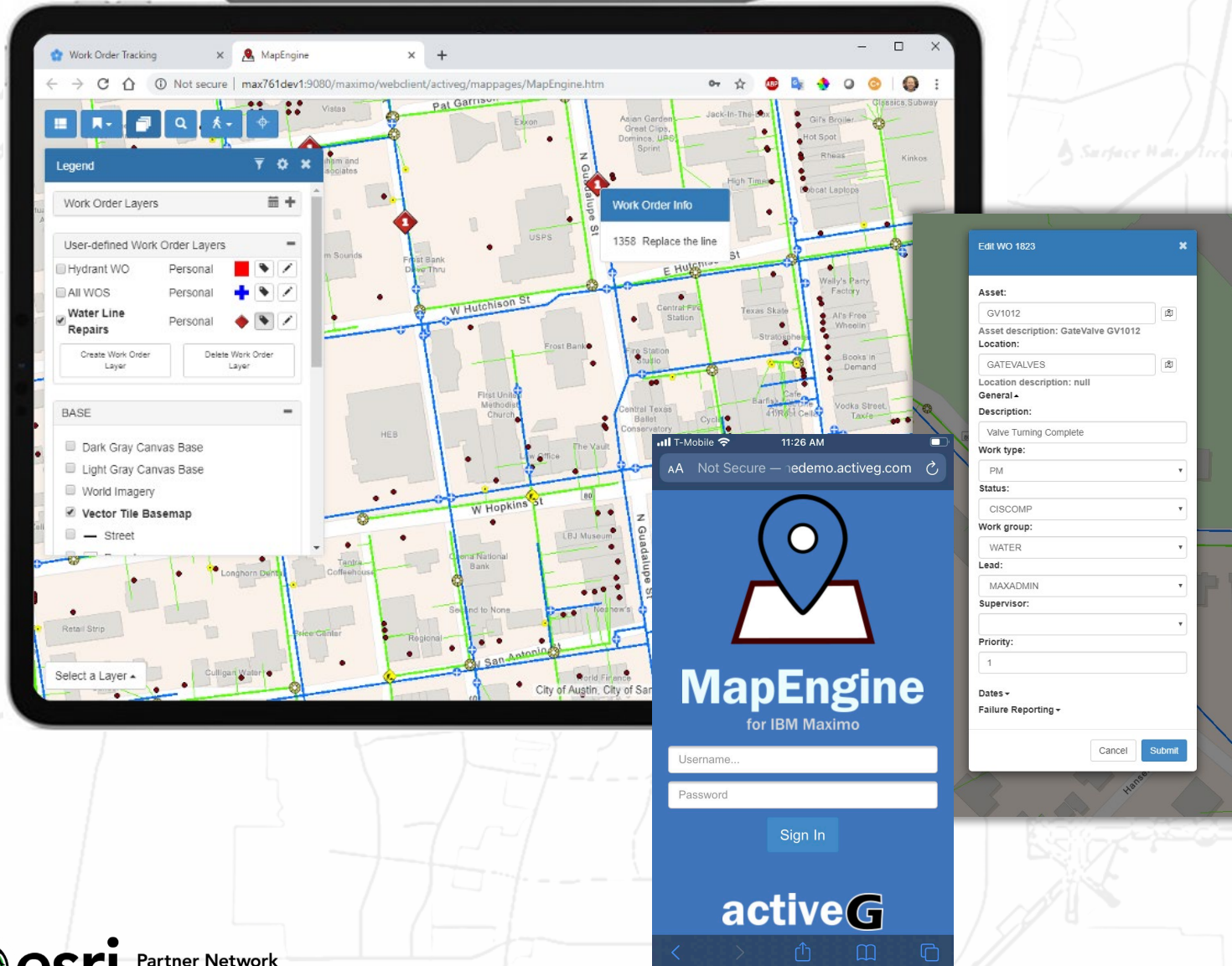


ActiveG MapEngine™

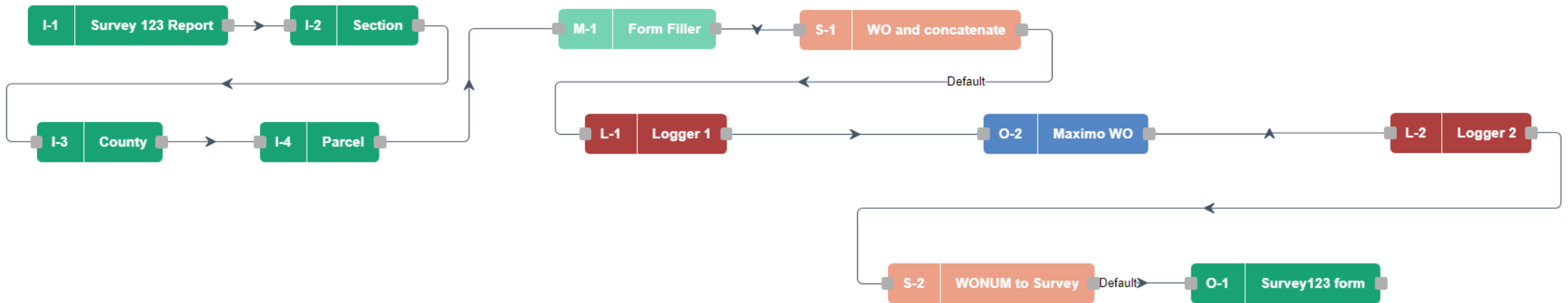


- A framework for spatial solutions in Maximo
- Geospatial visualization of your Maximo data
- Spatial input/output for Maximo.
- Run it with or without Maximo Spatial.
- 20+ years in the making

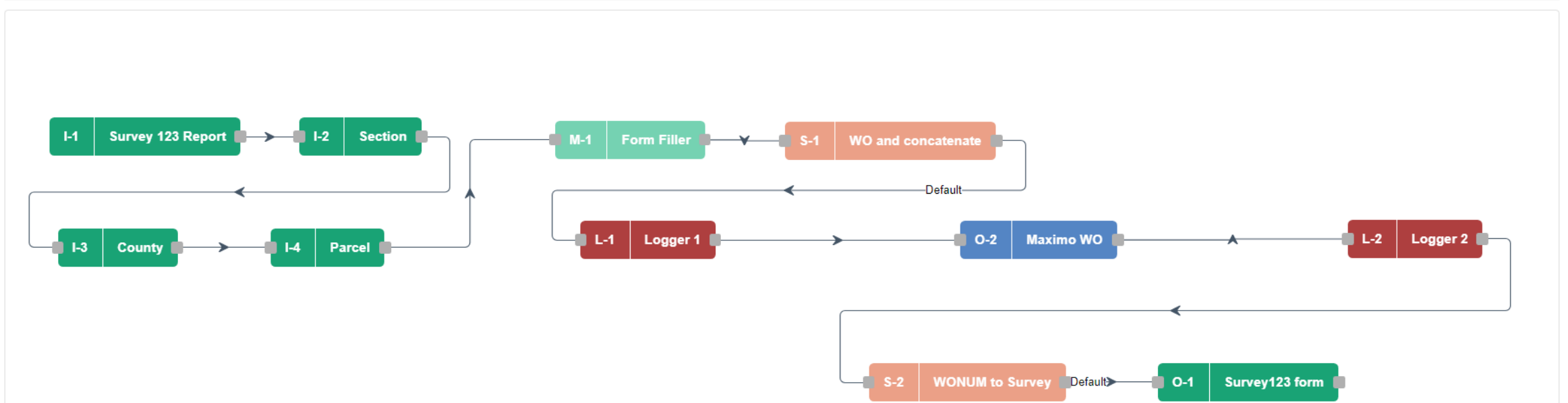
MapEngine Key Features/Benefits



- **Personalization and Flexibility**
 - View your data your way
 - Responsive, mobile-friendly
 - Bigger map, dual screen-capable
- **Deep Searching**
 - Define searches that fit business processes
 - Summary/report mode
 - Leverage Maximo saved queries
- **Mass changes based on geolocation**
 - Create work orders for selected assets, based on templates
 - Update field values on map-selected work orders.
- **Linear Ready**
- **Optimized Routing**



What is ActiveG Nash Workflows?



What is ActiveG Nash Workflows?

- Powerful, no-code process automation web application for **ArcGIS**.
- REST API integration with **IBM Maximo**, **ServiceNow**, and more.
- Native geo inputs to enrich your asset data.
- Enables Esri field apps with robust business logic.

