



JFC & Associates

Connecting the Real World

to the Digital World

Who We Are

Maximo Products & Services Provider Since 2001

Focus on Public Infrastructure, Transportation,
Higher Education, and Healthcare Facilities

Award Winning Team

**MaximoWorld Award: Best Overall Asset
Performance Management Program**

Enterprise Asset Management Specialists

Develop Innovative Solutions

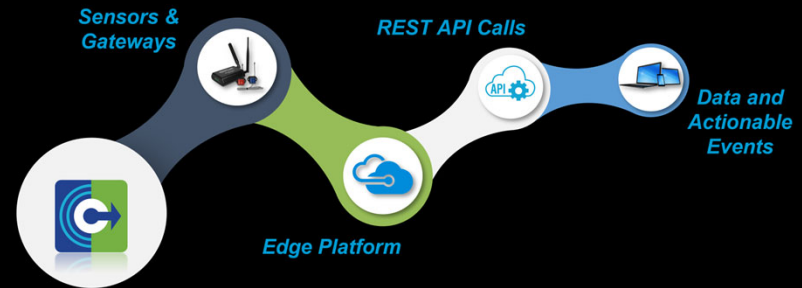
JFC & Associates



JFC & Associates

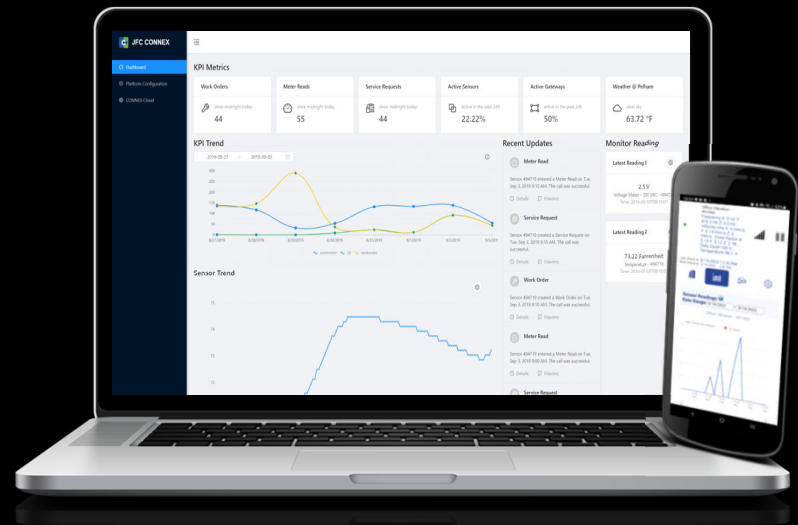


Connecting the Disconnected



CONNEX

JFC & Associates





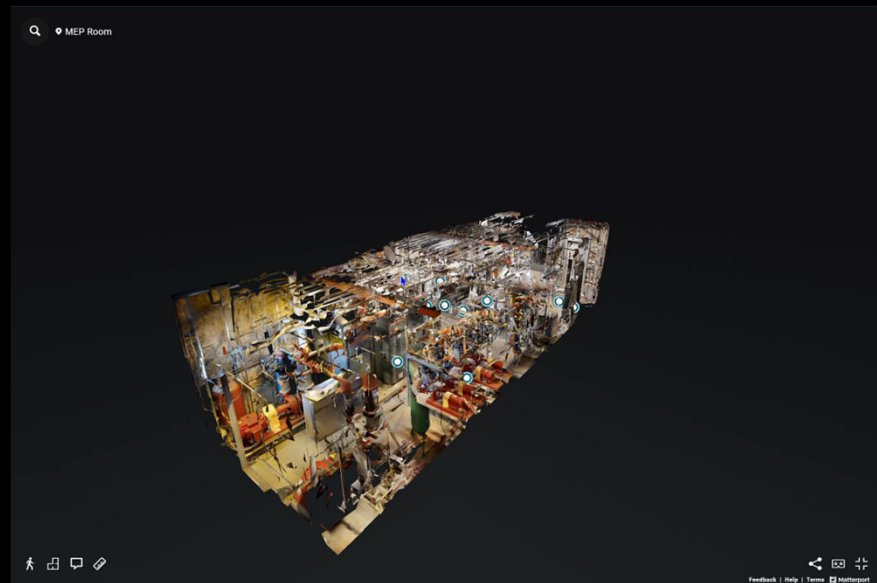
1008

Assetnum : 1008
Description: Hot Water Heater 2
Priority: undefined
Location: BOILER
Status: OPERATING
[Add WorkOrder](#)
[Add ServiceRequest](#)

CONNEX
VISUAL

JFC & Associates

A Digital Twin solution
Inline with JFC's core business of
Enterprise Asset Management

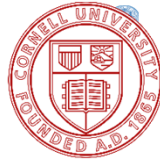


Powered by 
Matterport

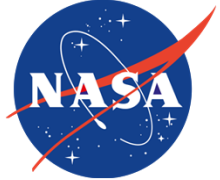
Who We Serve



JFC & Associates



Jefferson Lab
Thomas Jefferson National Accelerator Facility



Brandeis University

Bates

DGS
CALIFORNIA DEPARTMENT OF
GENERAL SERVICES



COVIDIEN



Seattle
Public
Utilities



**UNIVERSITY OF
DELAWARE**



Lifespan

**HORIZON
LINES**



UC San Diego
HEALTH SYSTEM



**HORIZON
LINES**

ArvinMeritor



Johnson & Johnson



BARNES JEWISH
Hospital
BJC HealthCare



JFC & Associates

www.jfc-associates.com
contact@jfc-associates.com

360 Central Avenue Suite 800
St Petersburg, FL 33701
(727) 258-5404