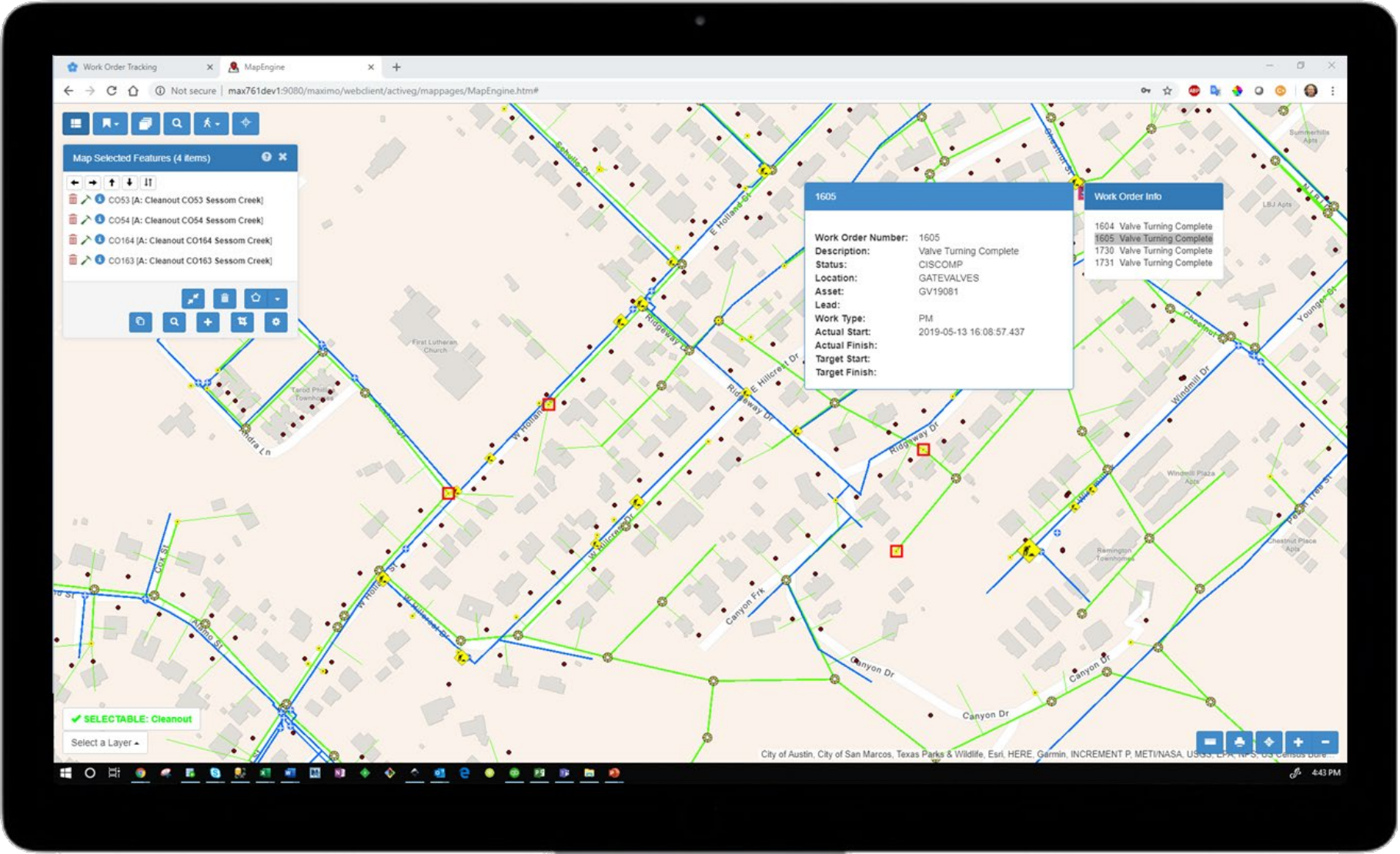




activeG

superior spatial solutions



Map Selected Features (4 items)

- CO53 [A: Cleanout CO53 Sessom Creek]
- CO54 [A: Cleanout CO54 Sessom Creek]
- CO164 [A: Cleanout CO164 Sessom Creek]
- CO163 [A: Cleanout CO163 Sessom Creek]

1605

Work Order Number: 1605
Description: Valve Turning Complete
Status: CISCOMP
Location: GATEVALVES
Asset: GV19081
Lead:
Work Type: PM
Actual Start: 2019-05-13 16:08:57.437
Actual Finish:
Target Start:
Target Finish:

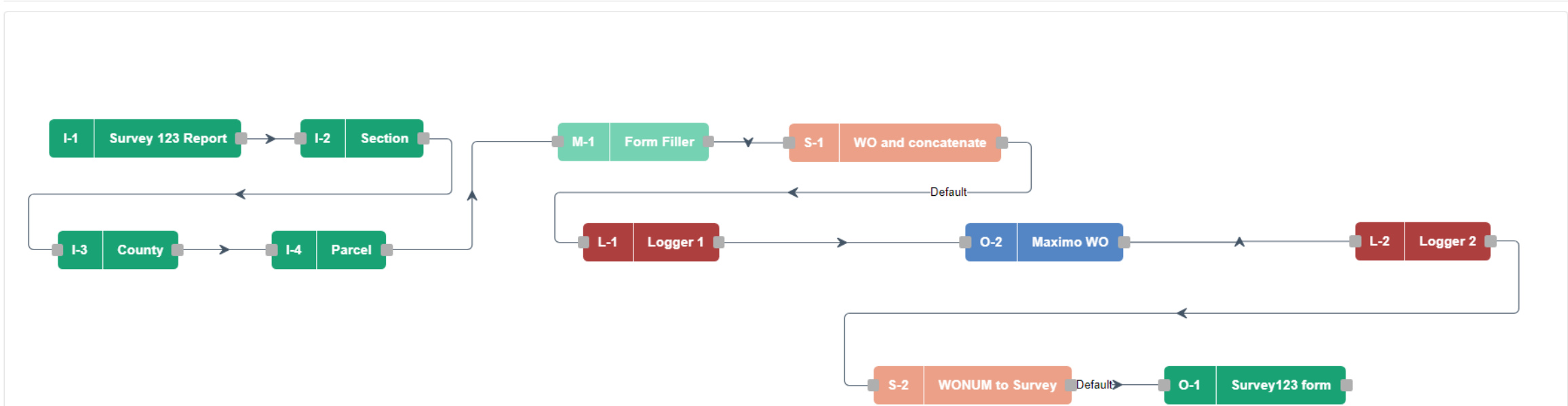
Work Order Info

- 1604 Valve Turning Complete
- 1605 Valve Turning Complete
- 1730 Valve Turning Complete
- 1731 Valve Turning Complete

SELECTABLE: Cleanout

Select a Layer

What is ActiveG Nash Workflows?



What is ActiveG Nash Workflows?

- Powerful, no-code process automation web application for **ArcGIS**.
- REST API integration with **IBM Maximo**, **ServiceNow**, and more.
- Native geo inputs to enrich your asset data.
- Enables Esri field apps with robust business logic.

