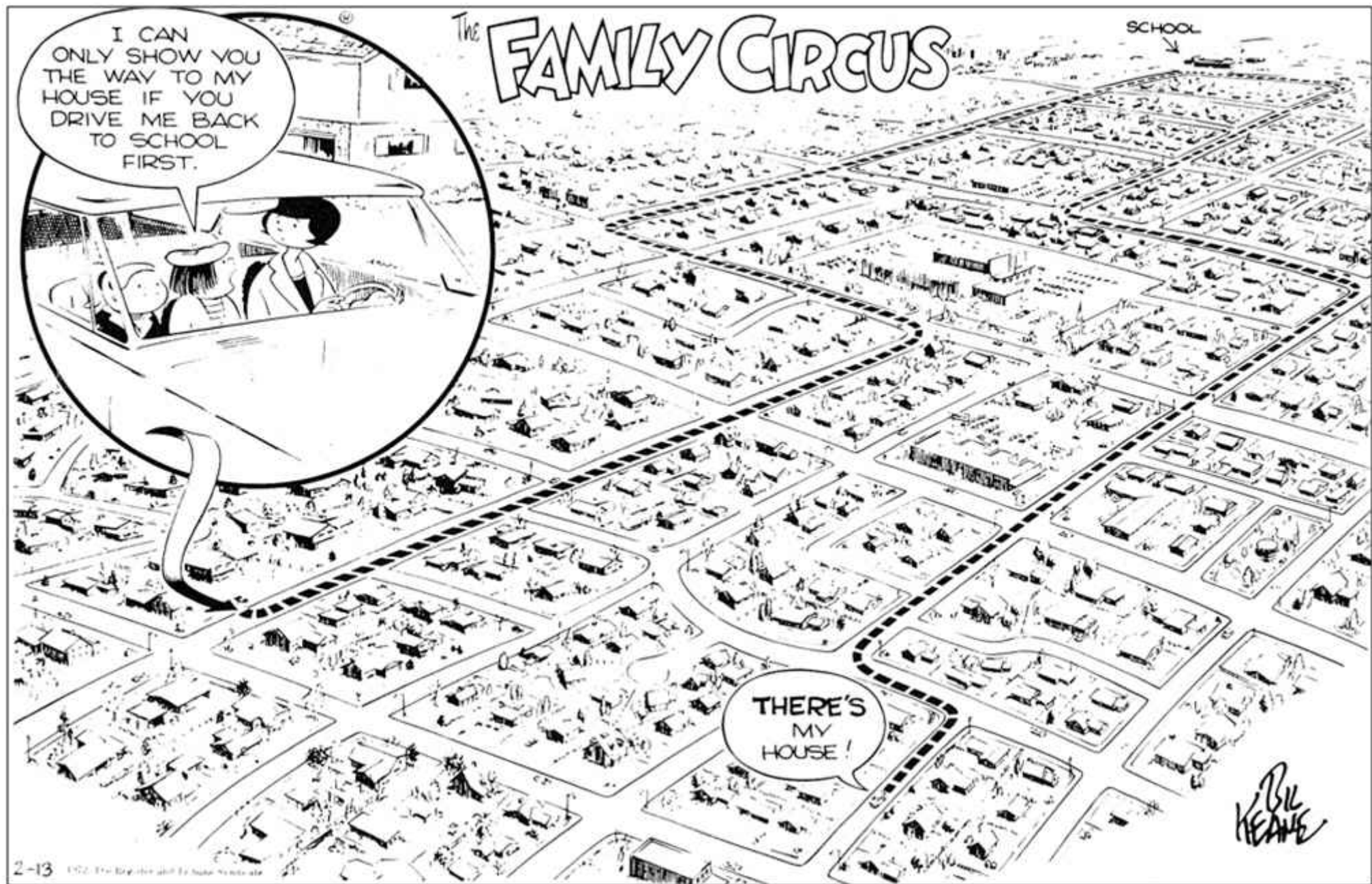




**activeG**

**superior spatial solutions**



# Spatial Suite for Maximo

## The road to integration success



## Release Ready Specialty

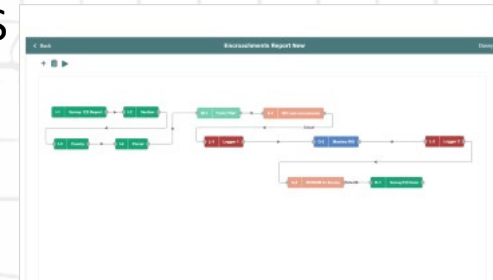
# MapEngine

The first and best  
spatial visualization  
app for Maximo.



# Nash Workflows

Deploy EAM/GIS workflows rapidly, leveraging the software you already have.



**Opqo by Sharptree**  
Game-changing  
mobile solution for  
Maximo. Compatible  
with MapEngine.



# GeoNexus

Powerful  
foundational data  
integration for  
ArcGIS and Maximo.

## Advanced GIS Integration Services

No one has more experience at delivering spatial program solutions for Maximo and ArcGIS. (



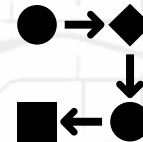
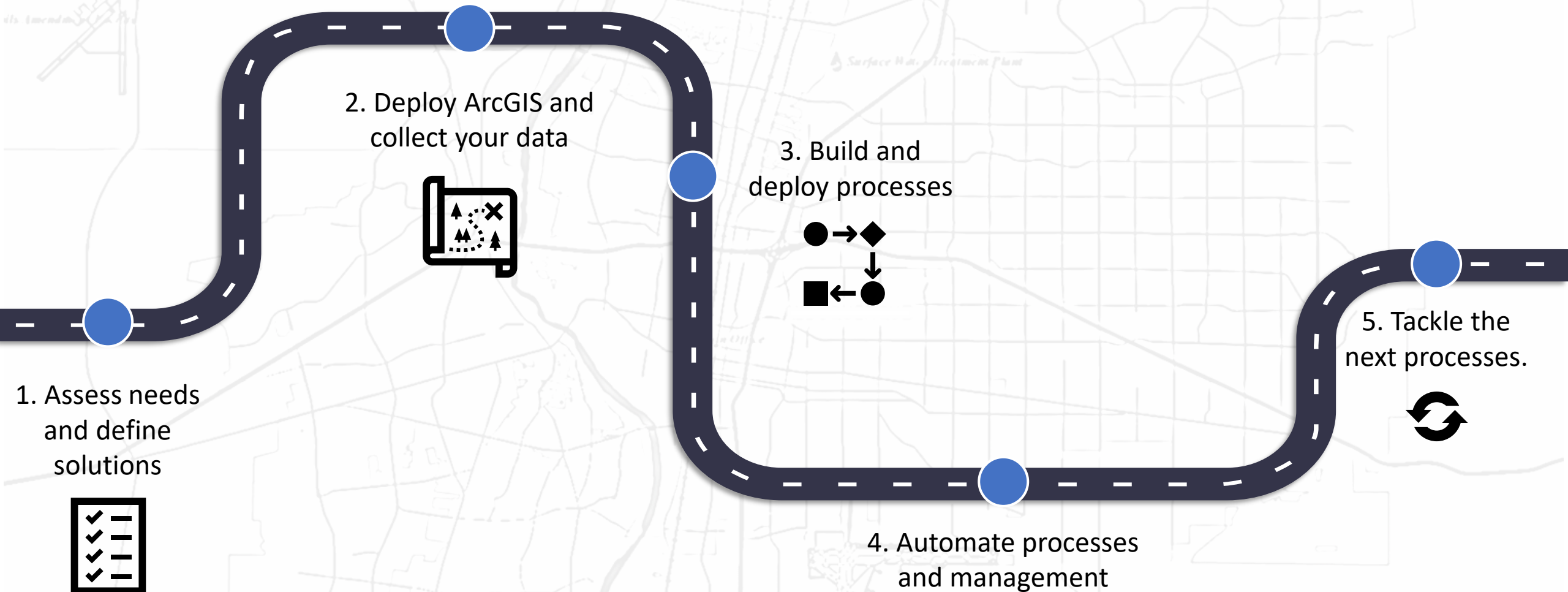


# ActiveG Spatial Suite for Maximo

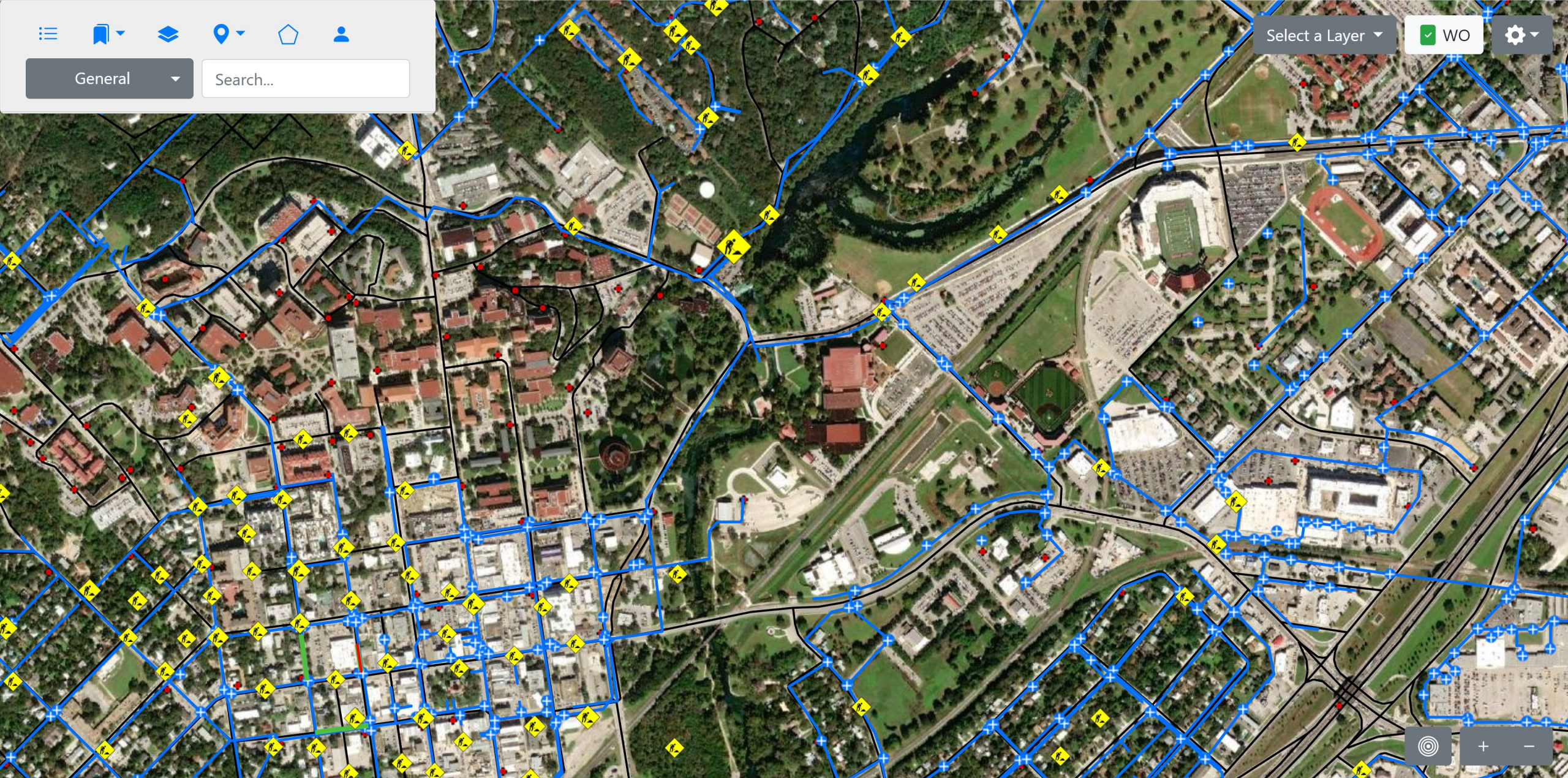
## The road to integration success



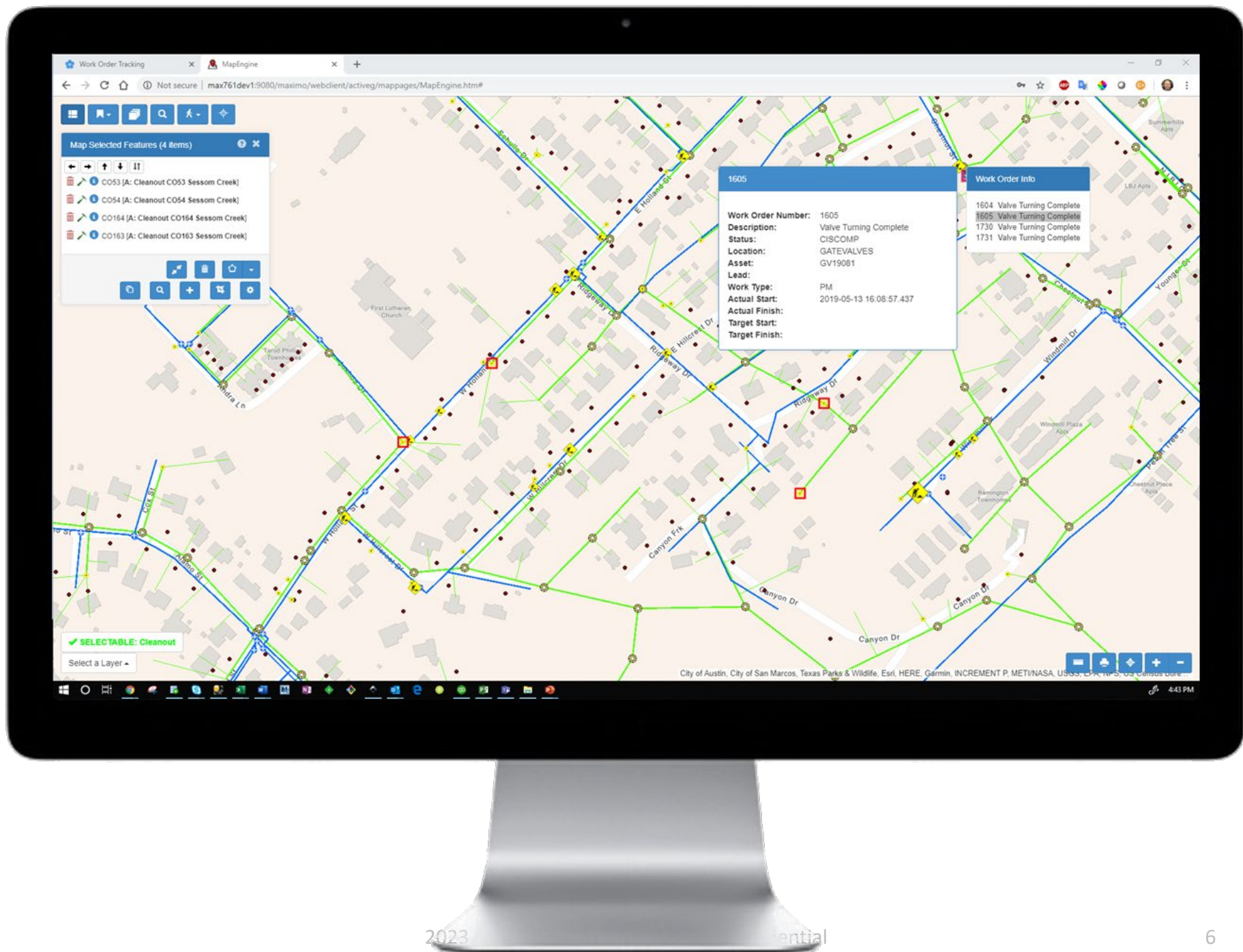
Release Ready  
Specialty





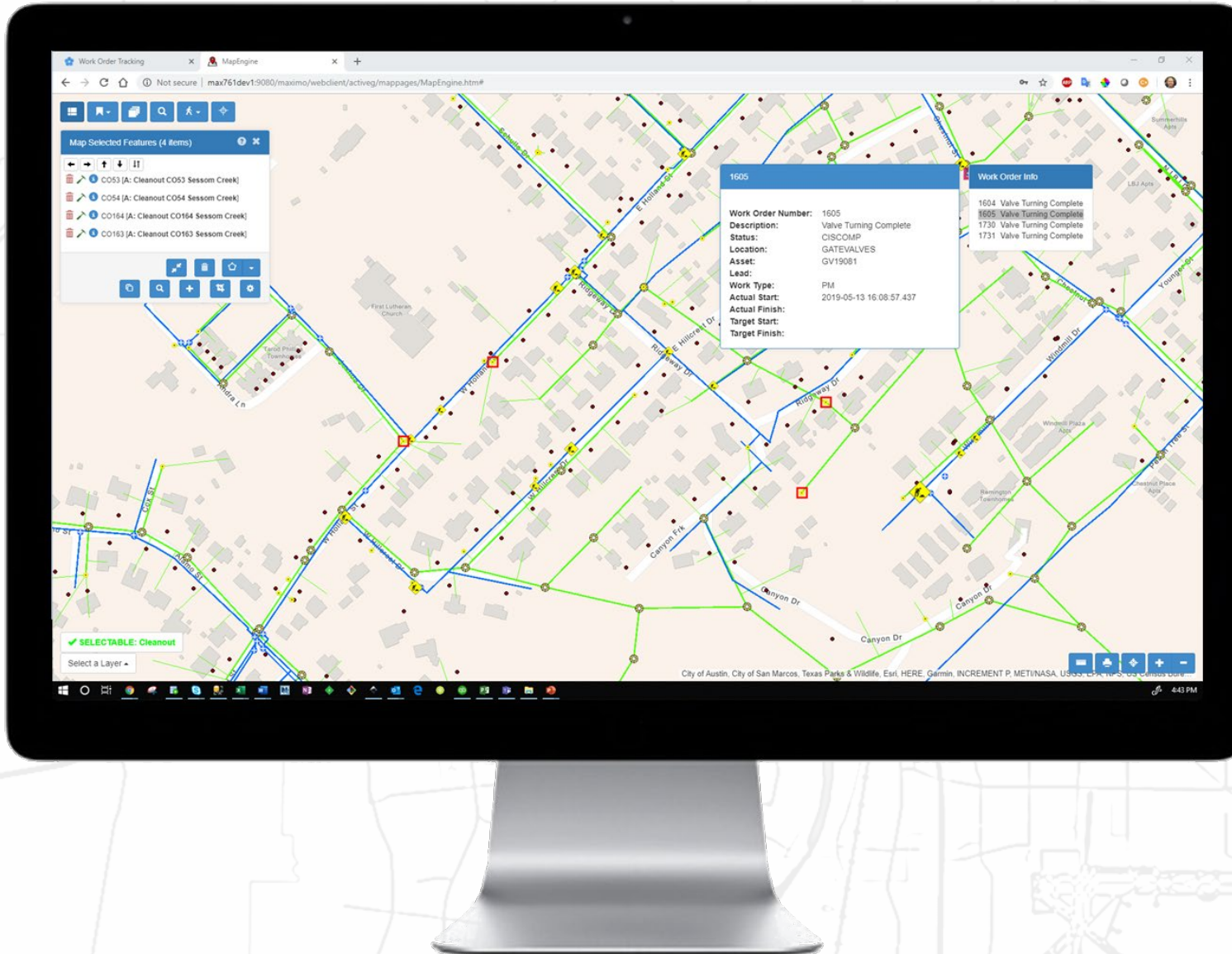






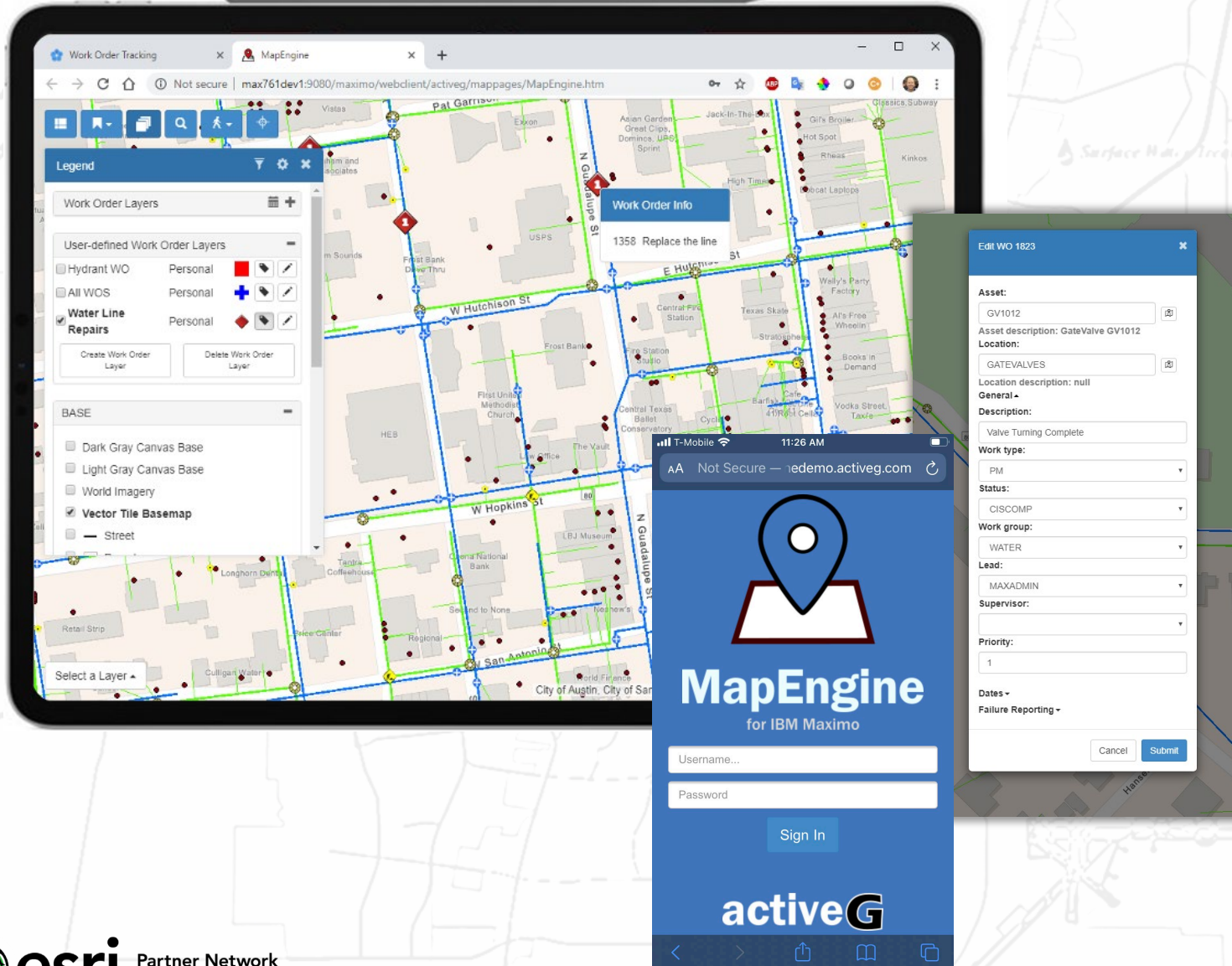
# ActiveG MapEngine™

- What is it?
  - Framework for spatial solutions in Maximo
  - Spatial visualization of Maximo Data
  - Spatial input/output for Maximo.
  - 20+ years in the making





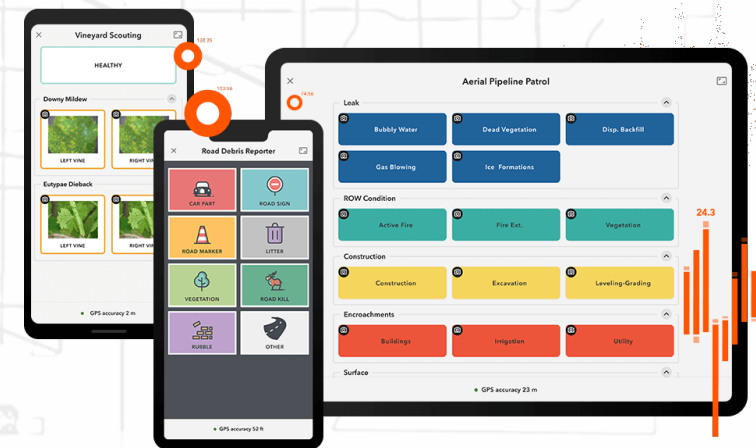
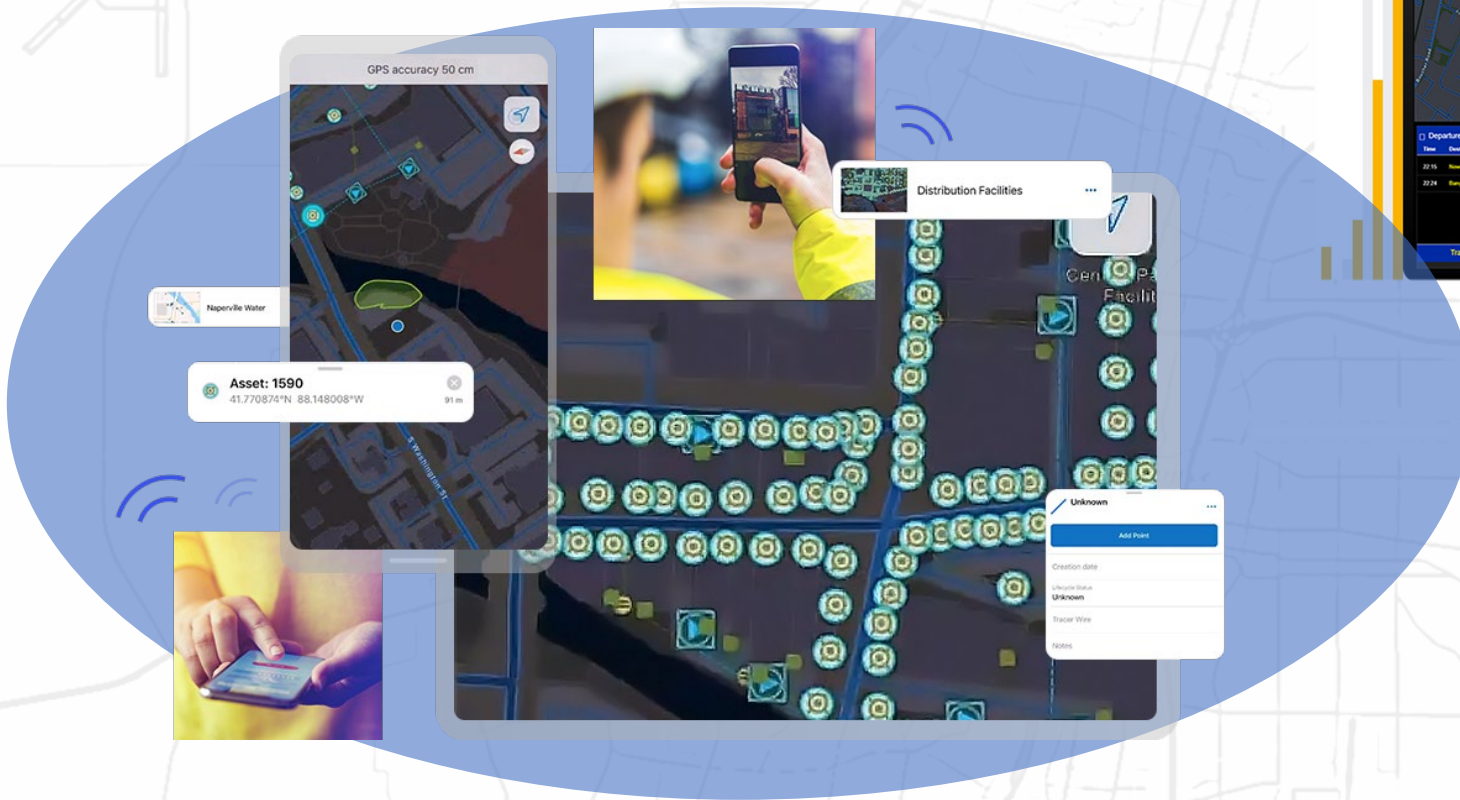
# MapEngine Key Features/Benefits

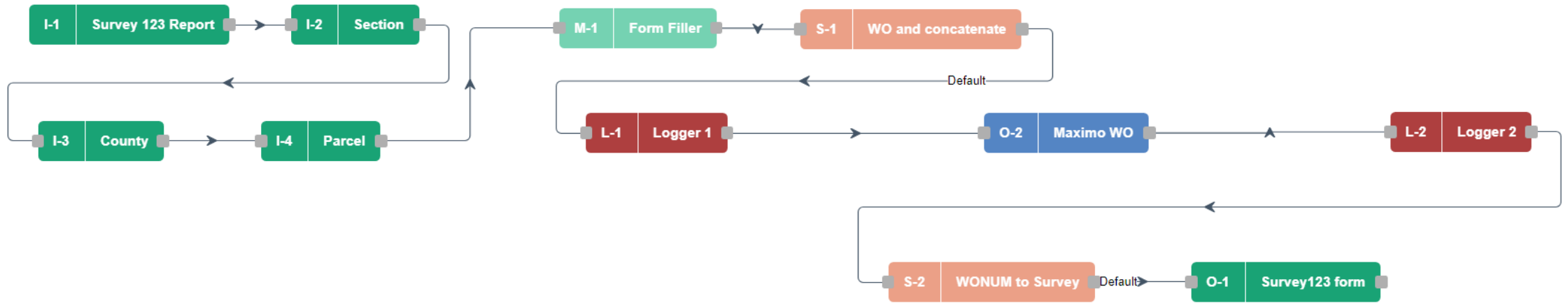


- **Personalization and Flexibility**
  - Responsive, mobile-friendly
  - Bigger map, dual screen-capable
  - User-defined work order layers
- **Deep Searching**
  - Define searches that fit business processes
  - Summary/report mode
  - Leverage Maximo saved queries
- **Mass changes based on geolocation**
  - Create work orders for selected assets, based on templates
  - Update field values on map-selected work orders.
- **Linear**
  - View work orders
  - View linear specifications
  - Supports Maximo Linear Asset Management



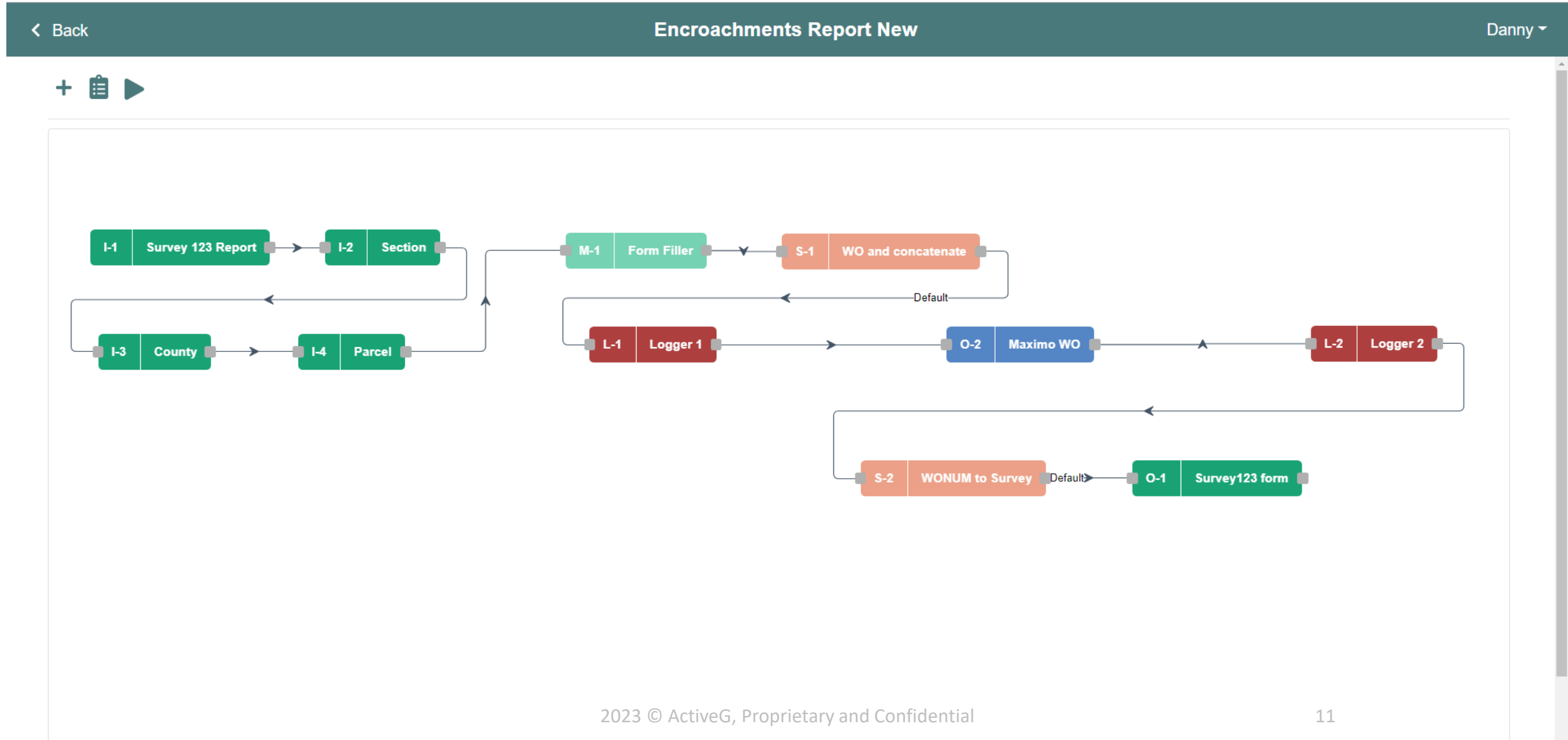
# Esri Solutions







# What is ActiveG Nash Workflows?



# What is ActiveG Nash Workflows?

- Powerful, no-code process automation web application for **ArcGIS**.
- REST API integration with **IBM Maximo**, **ServiceNow**, and more.
- Native geo inputs to enrich your asset data.
- Enables Esri field apps with robust business logic.

