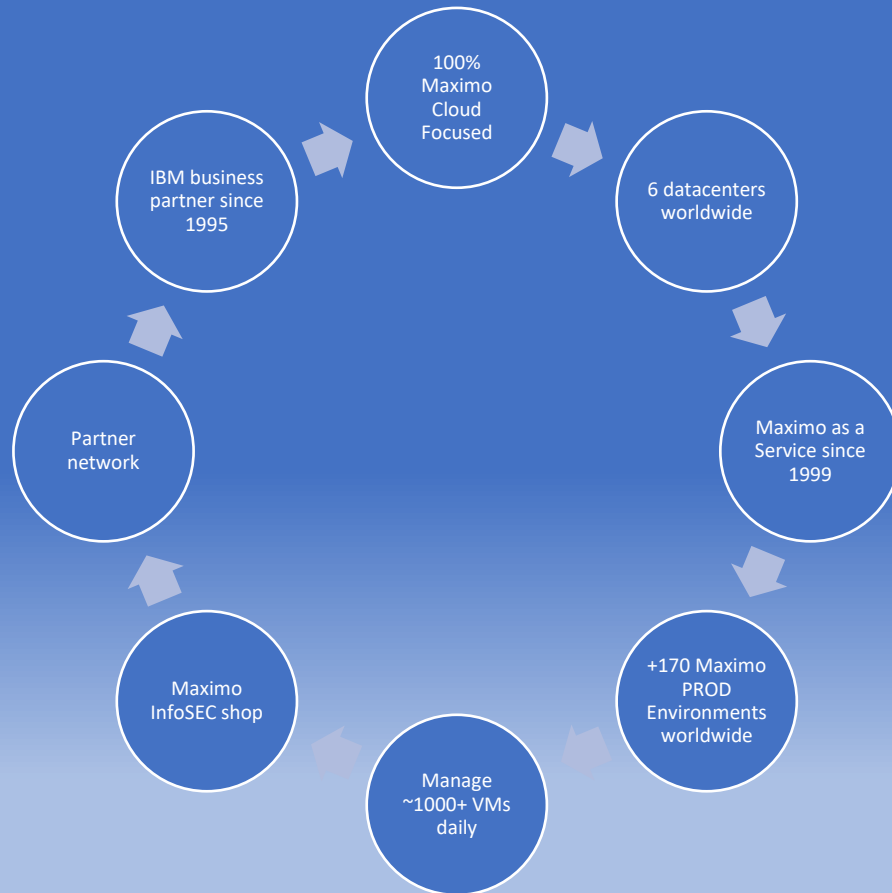


# Projetech

## Maximo as a Service

Maximo as a Service or “MaaS” is a Managed Service solution that provides a secure and fully supported Maximo application via Projetech’s cloud.



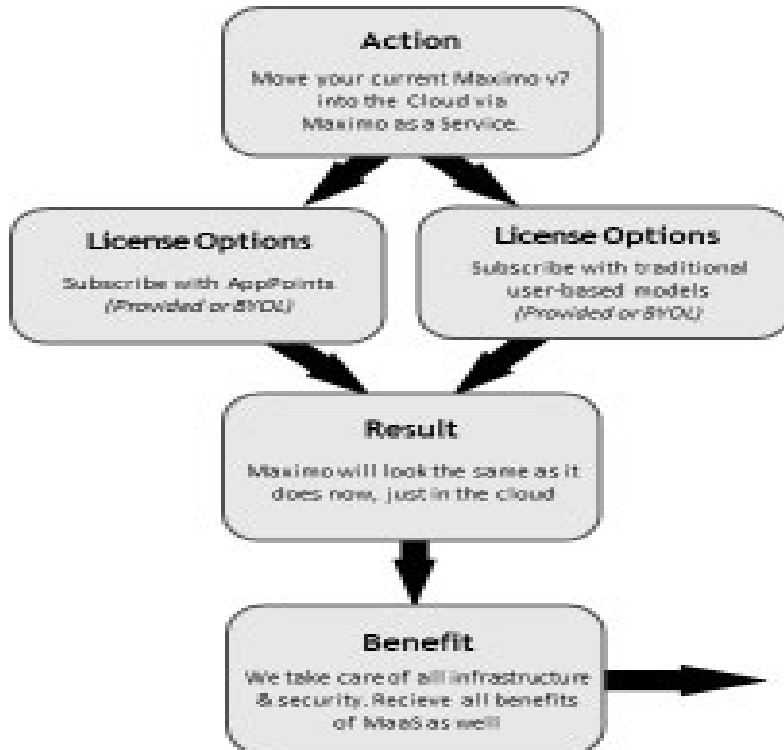
## Providing Fast & Reliable Maximo Application Suite

We offer an optimized, secure, stable and scalable Maximo Application Suite (MAS) instance provided as a Maximo as a Service (MaaS) subscription available via the Cloud.

### Avoid Disruption with MaaS

We will support your current Maximo systems and provide the migration to MAS based on **your timeline and your requirements.**

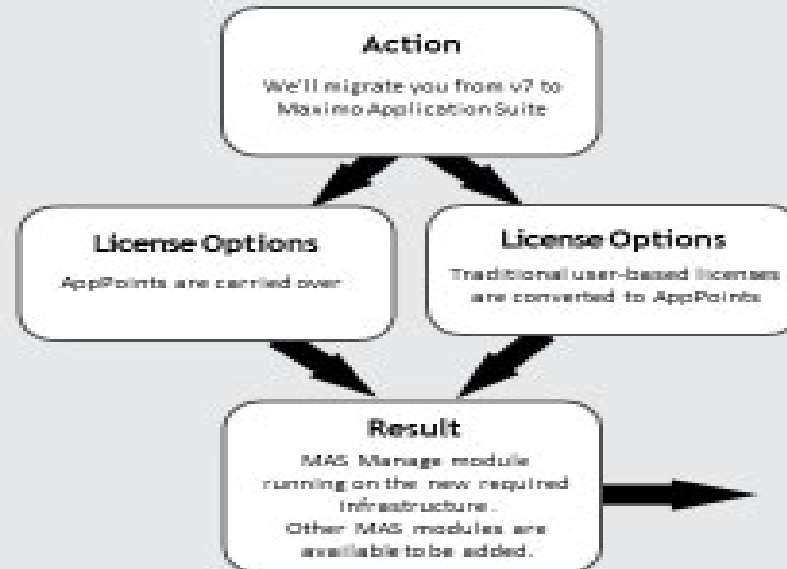
#### How It Works



## The Migration to Maximo Application Suite

We will not force you to migrate to MAS. Extended support is available past the Maximo v7 end of support dates.

When your team is ready, we'll migrate you to MAS Manage and will take care of all the backend technical changes so you can focus on the new MAS capabilities. This is all included with your Maximo as a Service (MaaS) subscription.



## Additional Modules with Maximo Application Suite

MAS is a major technology move to a container-based architecture that will facilitate access to capabilities found in modules outside the traditional Maximo scope. We can expand your MaaS environment to add these modules.

#### Monitor

Remotely monitor assets and optimize their runtime



#### Visual Inspection

Use AI in your inspections and monitoring



#### Health

Provides a first step in managing the performance of critical assets



#### Predict

Helps identify & manage asset reliability risks



#### Assist

An AI-powered solution that helps improve field technician productivity



#### Safety

Uses data to help improve workplace safety



#### Mobile

Designed to improve technician productivity and work engagement



The one-stop-shop for IBM Maximo

moremaximo.com



Need MORE Maximo Help?

moremaximo.com

## Top 5 Reasons to Join MORE:

- 1. Access to Certified Maximo Experts:** have a Maximo question? Need advice? Simply post and get answers!
- 2. Maximo Resource Library:** browse all the resources we have compiled from leading Maximo experts.
- 3. Maximo Focused:** this community is monitored and will only allow educational resources to be posted. No sales pitches or other related IoT solutions.
- 4. Never Miss an Event:** browse all the upcoming Maximo related events/webinars in one single list.
- 5. MORE Advantage:** with a large network of certified experts, we are constantly looking for the best resource to answer questions being posted!

### MM RE: Service Level Agreement

By: [Michael Marsonet](#), 23 minutes ago

You can find a decent write-up here <https://maximosecrets.com/2021/11/08/service-level-agreements-1-an-introduction/>. Simply put ...

### MM RE: PM Work Type

By: [Michael Marsonet](#), 26 minutes ago

One other thing to consider is Condition Monitoring as you can link a condition to a PM. I know the app is called "Preventative ...

### RE: More than one Item GL accounts for item (resource ...

By: [Craig Kokay](#), 11 hours ago

The quick answer is no. The longer answer is, of course, we can do anything. Firstly, I'm interpreting the "location" to be ...

### AR Crafts, assignments, and multi-craft people: Moving ...

By: [April Rudge](#), 15 hours ago

In an effort to get more proactive with scheduling, and resource load leveling, the organization is looking to move toward using ...

### RE: Maximo Inspection Forms

By: [Chavdar Cholev](#), yesterday

Good point Craig! I have opened ticket to IBM about that case, and will let you know once I receive info. Thank you ...

### Pacific Maximo Users Group (PacMUG)

🕒 Oct 13, 07:30 - 15:30 (PT)  
Seattle, WA, United States

### Mobile Maximo User Group (MMUG)

🕒 Oct 19 - 20, (ET)

### Northeast Maximo Use Group (NEMUG)

🕒 Oct 20, 08:00 - 15:00 (ET)

### CanMUG 2022 Calgary

🕒 Nov 3 - 4, (MT)  
Calgary, AB, Canada

### Las Vegas Maximo Users Group (LVMUG)

🕒 Nov 3, 09:00 - 15:00 (PT)  
Las Vegas, NV, United States

Powered by Projotech and their industry leading Maximo partners

