

# Enhancement Requests for the Maximo Application Suite

## The Ideas Portal

---

Ed Jones  
Offering Manager

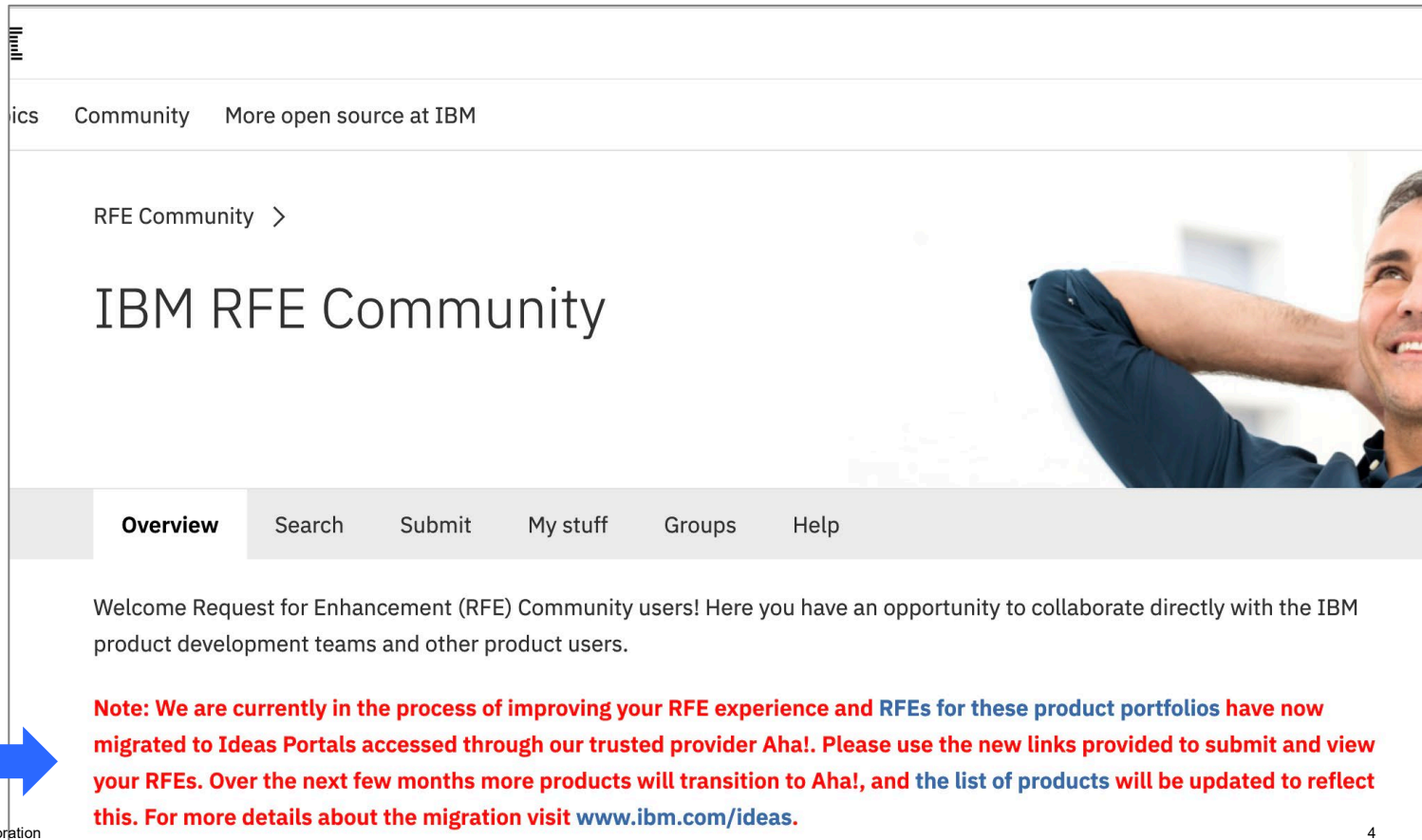
# Intent

## Discuss the Ideas Portal and solicit your feedback

- What is the Ideas Portal?
- How best to communicate your requests
- Voting and comments
- An example
- Next steps

# What is the Ideas Portal?

# It replaces the RFE community



The screenshot shows the IBM RFE Community website. At the top, there are navigation links: "ics", "Community", and "More open source at IBM". Below this, the breadcrumb "RFE Community >" is visible. The main heading is "IBM RFE Community". A navigation bar contains links for "Overview", "Search", "Submit", "My stuff", "Groups", and "Help". The "Overview" link is highlighted. The main content area welcomes RFE Community users and includes a red notice about migration to Ideas Portals. A large blue arrow points from the left towards the notice.

ics Community More open source at IBM

RFE Community >

## IBM RFE Community

Overview Search Submit My stuff Groups Help

Welcome Request for Enhancement (RFE) Community users! Here you have an opportunity to collaborate directly with the IBM product development teams and other product users.

**Note: We are currently in the process of improving your RFE experience and RFEs for these product portfolios have now migrated to Ideas Portals accessed through our trusted provider Aha!. Please use the new links provided to submit and view your RFEs. Over the next few months more products will transition to Aha!, and the list of products will be updated to reflect this. For more details about the migration visit [www.ibm.com/ideas](http://www.ibm.com/ideas).**

# Open RFEs were reviewed and migrated



# But the goal remains the same



## Welcome to the IBM Ideas Portal

Where the IBM community comes together to [ideate and co-create](#) the future of IBM's products.

On this portal, you can submit new ideas and view the status of the ideas you previously submitted, voted on or are subscribed to.

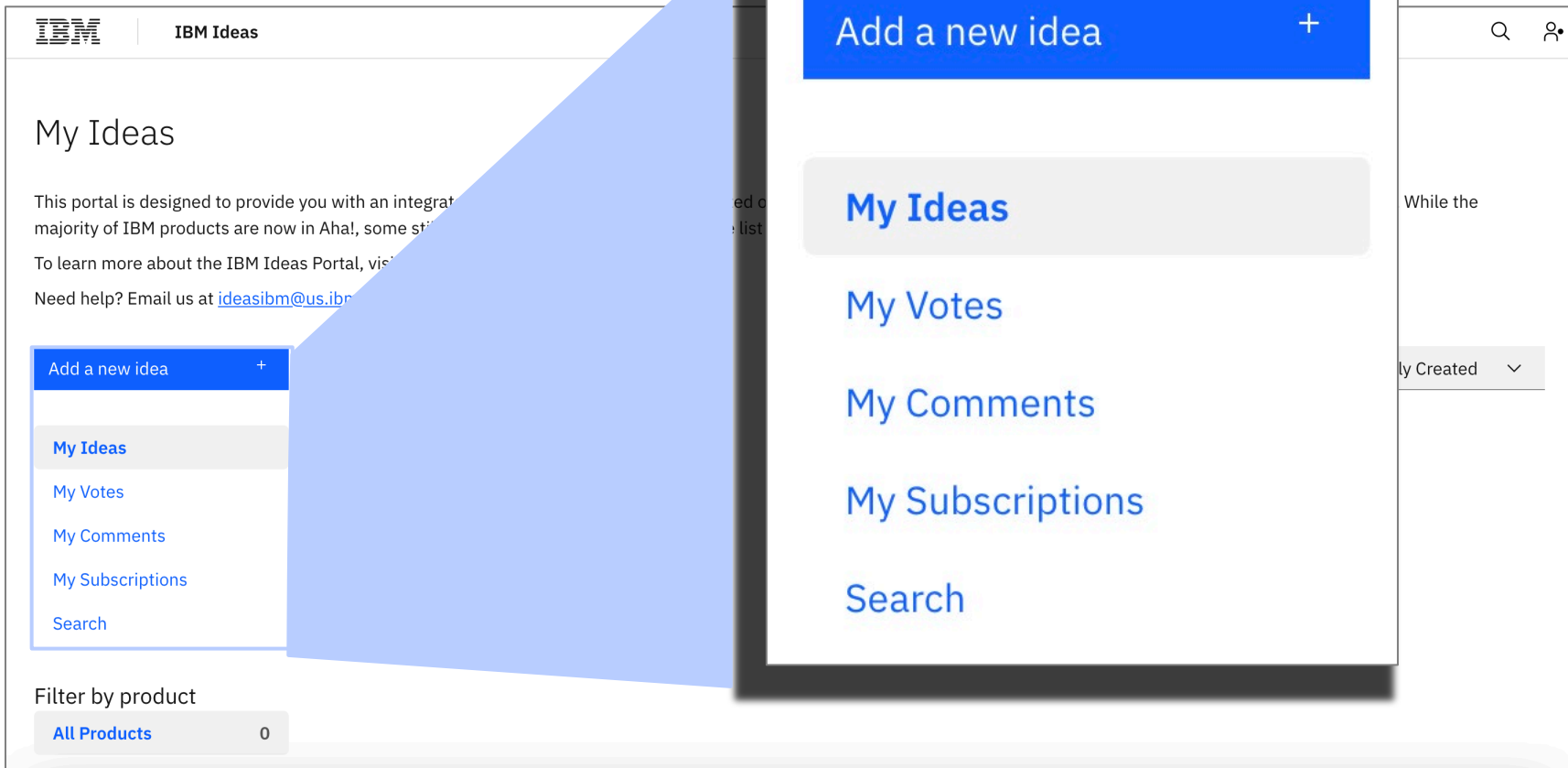
Visit [ideas.ibm.com](https://ideas.ibm.com) to get started

### Have a question?

Check out our FAQs below or email us at [ideasibm@us.ibm.com](mailto:ideasibm@us.ibm.com)

You can also check out our terms of use [here](#)

# What you will see



# The idea process



# Search first

## My Ideas

This portal is designed to provide you with an integrated view of all of your submitted, voted or commented on Ideas for any IBM product supported by an Aha! product portal. While the majority of IBM products are now in Aha!, some still need to be migrated. You can see the list of products currently supported by the IBM Ideas Portal [here](#).

To learn more about the IBM Ideas Portal, visit our [FAQs](#)

Need help? Email us at [ideasibm@us.ibm.com](mailto:ideasibm@us.ibm.com)

Add a new idea



PM



[My Ideas](#)

[My Votes](#)

[My Comments](#)

[My Subscriptions](#)

[Search](#)

Looking for some inspiration? Want to see if great minds really do think alike?

Use this search bar to start searching through IBM's public product portals

Sort By Relevance



### PM Interval Reset

Future consideration

When a work order for a meter based PM is completed, the current meter reading on the asset is used to update the PM. The meter reading entered o...

Idea for IBM MAS - Manage (Base) 3 0 Created on 28 Apr 2015 Last updated on 16 Feb 2022

Filter by product

[All Products](#)

59

### Adding the PM number to the PM Work order generation log

Future consideration

When Maximo runs the PM cron and generates workorders, the output is written to a log file. When PMs don't generate due to an error, the log contain...

# Search first

[Home](#) / [MASM-I-426](#) / [New idea](#)

12

VOTE

## PM Forecasts do not reflect Dynamic

It seems the PM Forecasts remain being calculated as static. I tested it with two PMs having the same Job Plan assigned to it, with different Total Work Units assigned on Job Plan Sequence. Forecast Costs, when calculated, came up as identical.

Here is a comparative illustration:

The discrepancy between the forecasted costs and the actual costs on Work Orders is significant.



Guest • Aug 9 2020 • **Future consideration**

## IBM MAS - Manage (Base)

**Idea priority**

High

Q Search ideas



Ed Jones ▼

Comments (3)

Paragraph

 Attach files

Post comment



You commented

13 Mar 05:28pm

Thanks for the screen shot. Could you give an example of the asset class(es)? Are these linear or nonlinear assets? Just looking for specific business cases. Thanks in advance!



Guest commented

10 Aug. 2020 09:49pm

Can you clarify the "On PM Forecast" screen shot as we cannot see the work unit, nor if it's that match JP.



Guest commented

9 Aug, 2020 09:57pm

Attachment (Description): PM Forecast vs WO Output

PM Forecast VS ...

# Upvote ideas that matter most to you

- Votes help us prioritize
- Comments help us clarify



# Nothing similar? Post an Idea

- What is the need?
- "<Your users> need a way to <address the need> so they can <benefit in this way>"
- Add anything that would be helpful to an offering manager:
  - Is this a new regulatory requirement?
  - Would it significantly reduce effort/frustration?
  - Any supporting documentation

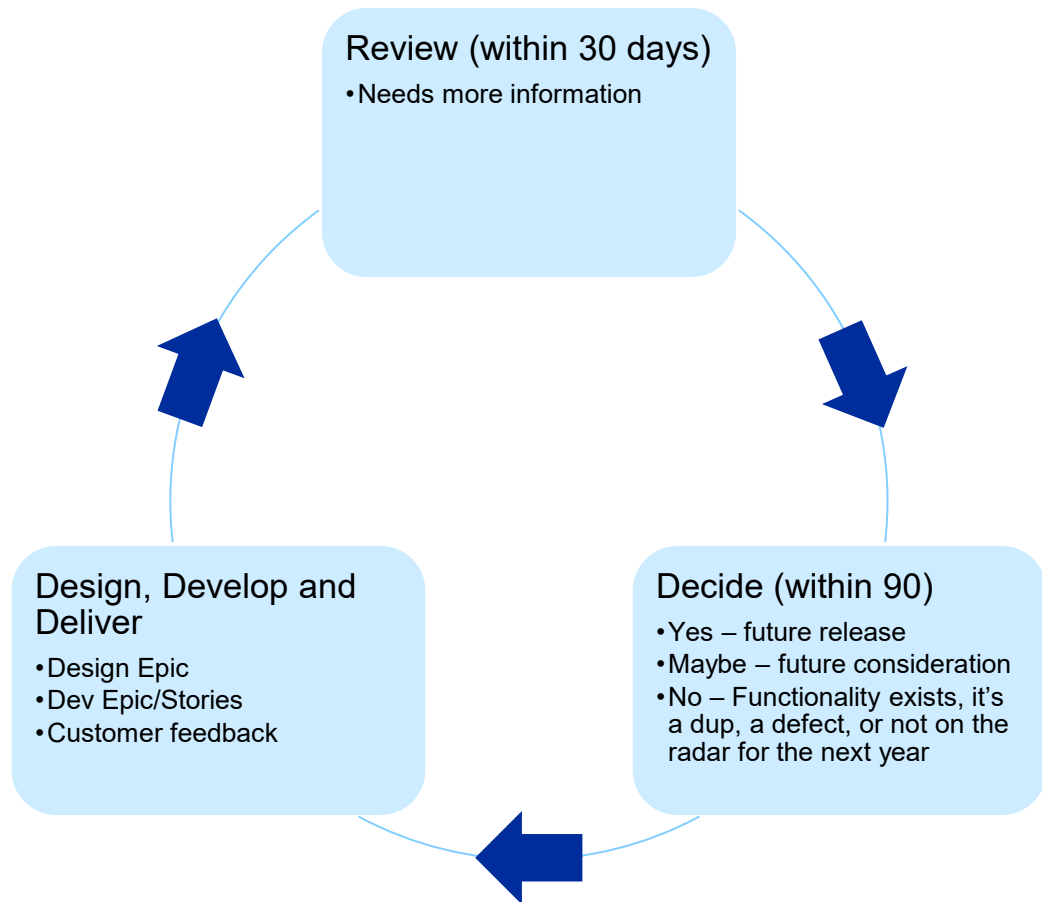
<https://www.ibm.com/design/thinking/page/toolkit/activity/needs-statements>

# Get feedback from the IBM team

- You should hear from us.
- Within 30 days



# The idea flow



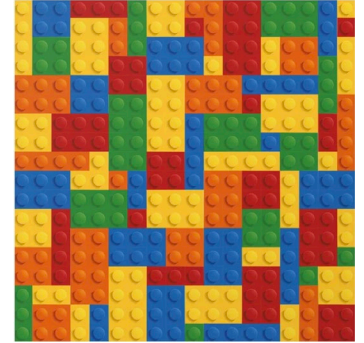
# The challenge – so many good ideas



Idea



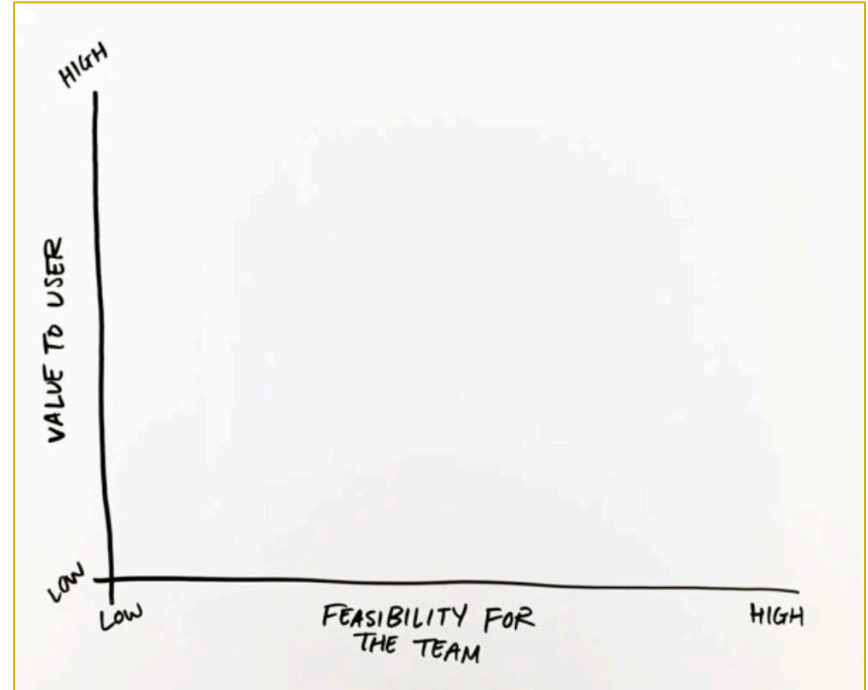
Ideas Portal



Enhanced Products

# The goal – ensure we are addressing the right ideas

- Do I understand the need?
- Do we do this anywhere else (industry solution)?
- Does it align with our roadmap?
- Have I heard this from other customers?
- What is the potential value to our customers?
- What is the scope of the enhancement?





How can we be ideate/co-create?

MASM-I-543 - PM scheduling from prior PM completion date

A Use Case

# MASM-I-543

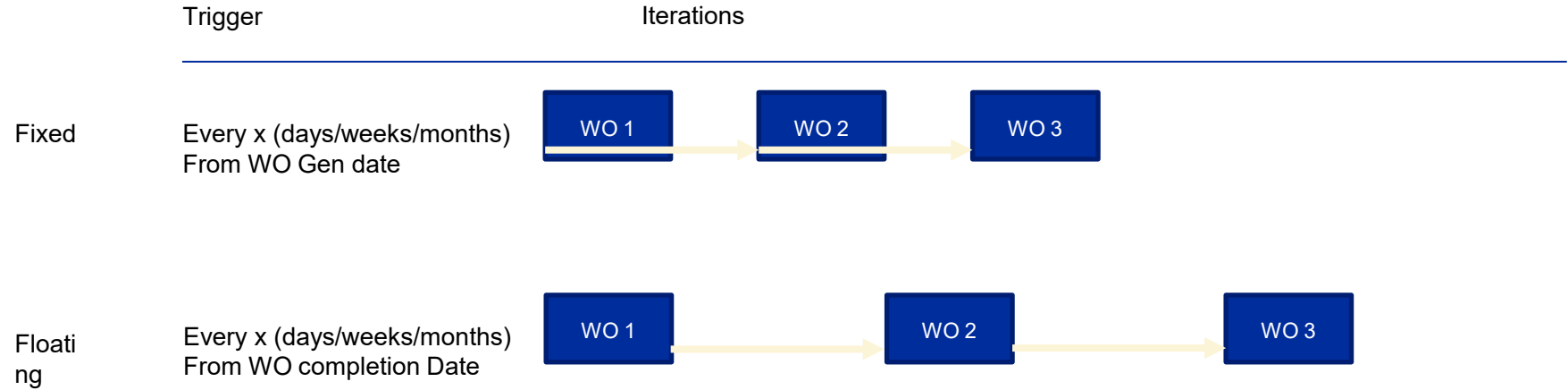
## Universal Studios

Maximo provides the option to calculate the PM next due date based on the frequency and the last completion/start date of the same PM.

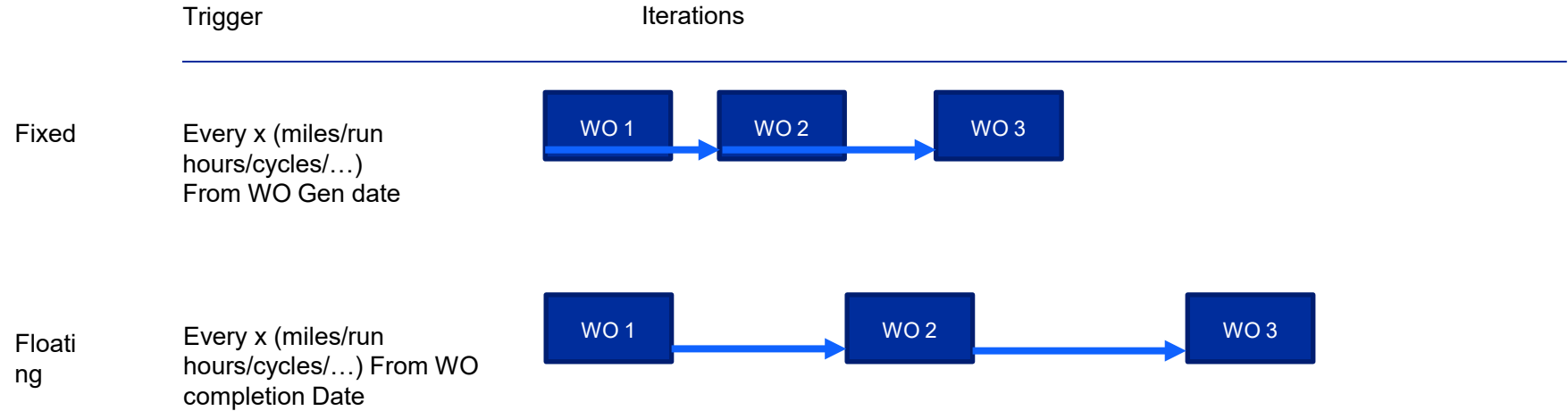
We have a common requirement to set the due date of one PM based on the completion date of a different PM.



# Current – Time based



# Current – Usage based



# Current – Combo – Time/Usage based

Trigger

Iterations

Every x (days/weeks/months)  
From WO Gen date

OR

Every x (miles/run  
hours/cycles/...)  
From WO Gen date

Whichever comes first



# Current – PM Hierarchy

Trigger

Iterations

---



# Current PM Scheduling Options

Take this action when...

- A condition is met in Condition Monitoring
  - Temperature/Pressure/Vibration meets threshold (gauge meter)
  - Undesirable condition is observed (characteristic meter)

# Current – Condition Based

Trigger

Iterations

Every 20,000 miles



OR

Temp > 100

Oil Color = 'DARK'



- A condition (threshold/value) is met/exceeded in Condition Monitoring
- Eg temperature/pressure/vibration meets threshold (gauge meter)
  - Undesirable condition is observed (characteristic meter)



# Current – Job Plan Sequence

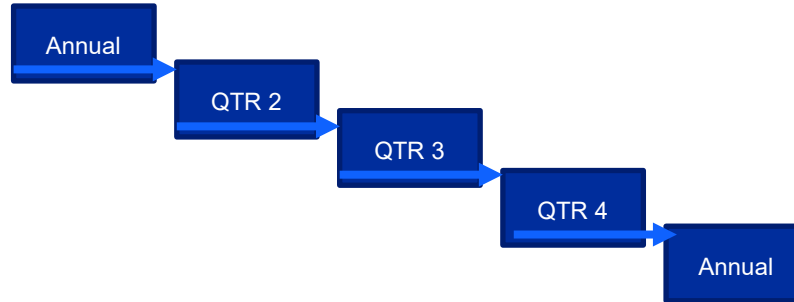
Trigger

Iterations

Every x (days/weeks/months)  
From WO Gen date

Do Annual  
Then Quarterlies  
Then Annual

...



# Proposed change

The technician needs to grease the wheels on the Incredible Hulk ride 30/60/90 days from the completion of annual maintenance.

# Proposed Change – PM Dependencies

Trigger

Iterations

PM A (Freq: 1 yr)



Activate

PM B (Freq: 30 days)



PM A triggers PM B upon completion.

PM B Next Due Date is completion date of PM A + 30 days

# Approach?

Create an (unsupported) automated script to share with the customer

# Questions

What can we do to engage user groups in the Ideas Portal?

- Inform/Educate
- Share/Discuss high priority ideas at user group meetings
- Have a regular Ideas update?

What can we do to augment the process? What if an idea isn't accepted?

- Share local fixes?
- Share industry solution approaches?
- Discuss/provide unsupported scripts?

# Ideas and Communities

Share local solutions



Connect to Ideas

Intent – Communicate/elevate popular solutions

<https://community.ibm.com/community/user/iot/communities/community-home/digestviewer?communitykey=3d7261ae-48f7-481d-b675-a40eb407e0fd>

advance your digital reinvention.

Getting Started


This Community Search for your favorite topic

Try out IBM Technology Zone! →

## Maximo

Settings

Group Home Discussion 3.4K Library 151 Blogs 142 Events 0 Members 7.4K



**IBM® Maximo® is an Enterprise Asset Management (EAM)** software system enabling you to manage all of your asset types on a single software platform.

Built on a service-oriented architecture (SOA), Maximo delivers a comprehensive view of all assets, their conditions and locations, and the work processes that support them - to provide you with optimal planning, control, audit, and compliance capability!

Join this community to learn, network, and collaborate with the extensive #maximocommunity 1

Hi, When we create a workorder from a `<em>PM</em>` (generate workorder) which is associated to a `ipnum` containing itemnums, we can see the items showing in the newly created workorder. We also see that the `wpmaterial.requestnum = invreserve.requestnum` for the created workorder which is normal. However, ...

**RE: Scheduled Start Date for PM Work Orders**  
Posted By [Priyaranjandas Kolambkar](#) Feb 18, 2022 5:50 AM  
Found In Egroup: [Maximo](#) \ [view thread](#)  
It turned out to be a configuration where the date was set through an action in the workflow. Also found this while searching in the community: <https://community.ibm.com/community/user/iot/viewdocument/script-to-set-scheduled-start-date?CommunityKey=60718772-c63c-4d74-bdad-56d8beac4ba3&tab=librarydocuments> ...

**RE: Crontask instances failing to run**  
Posted By [Steven Shull](#) Feb 7, 2022 8:29 AM  
Found In Egroup: [Maximo](#) \ [view thread](#)  
this is this type of monitoring needs more intelligence. While a cron task is running, it should have a `lastrun>lastend`. You're looking for when it's in this state for a period longer than you expect. But a `<em>PM</em>` WOGEN may take 2 hours during a normal execution and an email listener should take ...

**RE: Scheduled Start Date for PM Work Orders**  
Posted By [Craig Kokay](#) Feb 4, 2022 7:03 AM  
Found In Egroup: [Maximo](#) \ [view thread](#)  
Hi Priyaranjandas That is one of those little to unknown features you have revealed to me. I create a JP with a single labor, I do note that no craft was added. When I assigned the JP to a new work order, the scheduled dates were populated. I then went back to the same JP, revised it and removed the ...

**RE: Scheduled Start Date for PM Work Orders**  
Posted By [Priyaranjandas Kolambkar](#) Feb 4, 2022 6:09 AM  
Found In Egroup: [Maximo](#) \ [view thread](#)  
Thanks Craig. I was coming from this technote from IBM <https://www.ibm.com/support/pages/workorder-generated-<em>pm</em>-has-scheduled-start-and-finish-dates-populated> The job plans are not having any labor, but they have craft associated with it. So was wondering if I was missing something. I guess ...

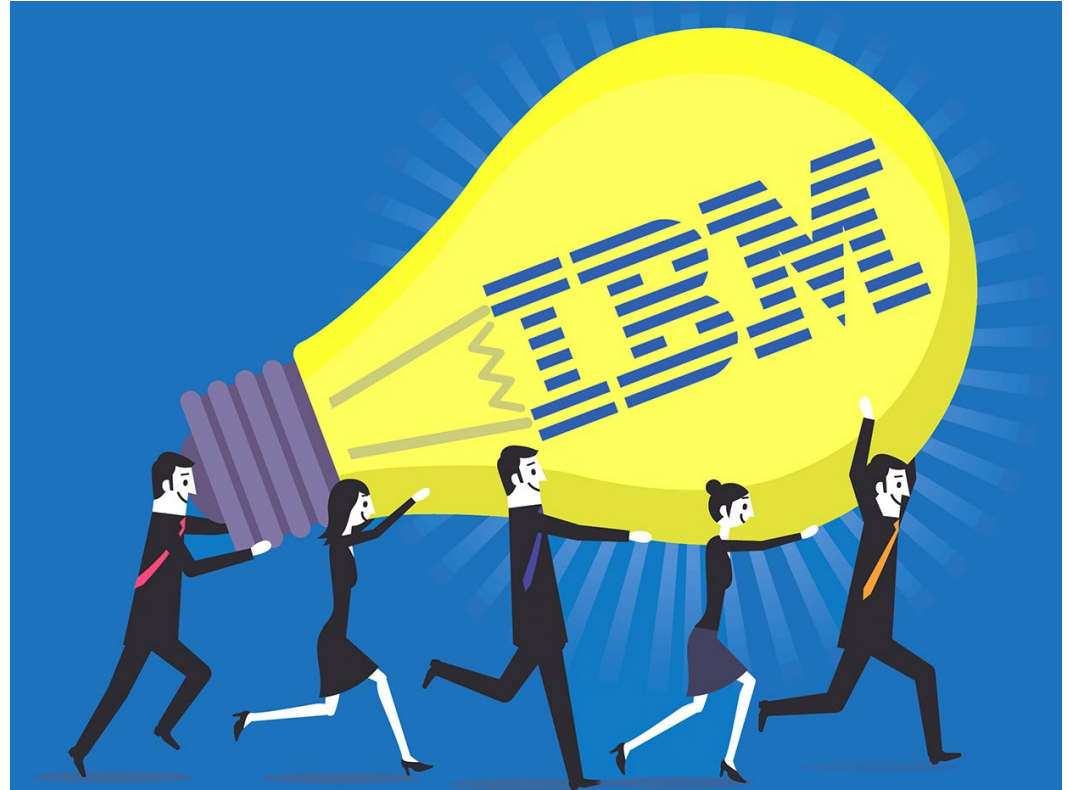
# Questions?

# IBM

# Thank you

Ed Jones  
Offering Manager

—  
edjones@us.ibm.com  
+1-978-204-3678  
ibm.com



© Copyright IBM Corporation 2022. All rights reserved. The information contained in these materials is provided for informational purposes only, and is provided AS IS without warranty of any kind, express or implied. Any statement of direction represents IBM's current intent, is subject to change or withdrawal, and represent only goals and objectives. IBM, and the IBM logo, are trademarks or registered trademarks of International Business Machines Corporation, in the United States and/or other countries. Other product and service names might be trademarks of IBM or other companies. A current list of IBM trademarks is available on [ibm.com/trademark](https://www.ibm.com/trademark).



